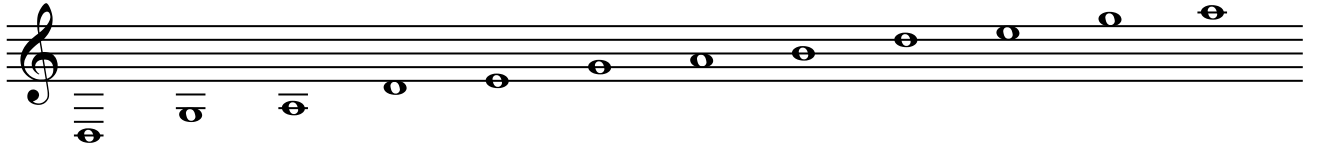


Gayaguem Etude I

Jean Ahn

Tuning



Fast as possible 빠르고 강하게

A musical score for Gayaguem Etude I, consisting of six staves of music. The first staff begins with a **ff** dynamic marking. The music is written in treble clef and features a complex rhythmic pattern with many sixteenth and thirty-second notes. There are several dynamic markings throughout, including **ff** at the end of the sixth staff. The score includes various musical notations such as slurs, accents, and articulation marks. The piece concludes with a final **fff** dynamic marking.

f *p* *f* *p*

f *mf*

mf *f*

R.H. 양손 번갈아가며 긁기 L.H. R.H. *fff*

f *p* *f*

f

f

점점 안쪽에 가깝게 *rit. sul tasto* *p* *f*

a tempo

손톱으로 긁기

position ord.

pp

L.H. *ff* *pp*

상행은 빠르게 하행은 점점 느리게

tempo sim.

f *mp* *mp* *mp*

fast

molto rit.

pp

fast

누르자마자 막기

subito f

smorzando

ff *pp*

소리가 사라질때까지 계속